



McCartyneys

Rural

LUDLOW MARKET SALE NEWS MONDAY 24th JUNE 2019

FINISHED CATTLE - 239

Another day, another trade, all much of a muchness. *Prices were as follows:-*

	Top	Av.	<i>Estimated deadweight Ex K.K.C.F. & S.B.O. Charge</i>
MEDIUM STEERS (465-550)			
Best Quality	208.5	202.0	354.3
Overall	208.5	202.0	354.3
HEAVY STEERS (555+)			
Best Quality	210.5	201.8	354.0
Standard Quality	194.0	187.6	347.0
Also Rans	181.5	167.1	321.3
Overall	210.5	184.2	341.0
HEAVY HEIFERS (485+)			
Best Quality	234.5	213.0	361.0
Standard Quality	195.0	189.6	348.8
Also Rans	179.5	165.0	317.3
Overall	234.5	187.8	347.7
BULLS			
LIGHT (370-460)	154.5	150.5	290.0
MEDIUM (465-555)	190.0	175.8	319.6
HEAVY (560+)	217.0	184.6	332.6

Average for all barley bulls, including extreme dairy types. Prices based on killing percentages achieved at Ludlow, not what they might be. U.K. strip employed. If E.E.C. strip used, can add approximately 4p per kg.

QUALITY PRICE REPORTING

Quality Supermarket averages as follows: -

	STEERS 500-695 KG	HEIFERS 480-650 KG	YOUNG BULLS 450-550 KG
PREMIUM	201.7	213.0	196.6
PRIME	188.2	190.0	175.1
OTHERS	165.3	166.4	153.3

BARREN COWS & OLD BULLS - 24

A similar trade. *Prices were as follows:-*

Grade 1 Cows to 135.5p av. 135.5p
Grade 3 Cows to 115.5p av. 104.4p
Cull Bulls to 159.5p av. 159.5p

Grade 2 Cows to 124.5p av. 120.9p
Grade 4 Cows to 84.5p av. 81.2p
Overall average 107.9p

FINISHED SHEEP - 3,273

Despite their price for June, more buyers looking for lambs than anything else. Prices up to 261.5ppk. *Prices were as follows:*

Weight	Top	Av.	Estimated deadweight	
			Price Per Kg	Price Per lb
LIGHT LAMBS	(25.6-32)			
Home Trade	205.0	205.0	436.0	198.2
Overall	205.0	205.0	436.0	198.2
STANDARD LAMBS	(32.1-39)			
Export Quality	261.5	222.5	463.5	210.7
Home Trade	211.0	201.4	428.5	194.7
Overall	261.5	209.1	440.2	200.1
MEDIUM LAMBS	(39.1-45.5)			
Export Quality	257.0	223.5	465.6	211.6
Home Trade	211.5	206.6	439.5	199.8
Overall	257.0	212.1	446.5	202.9
HEAVY LAMBS	(45.6-52)			
Export Quality	215.0	215.0	447.9	203.6
Home Trade	211.5	207.6	441.7	200.8
Overall	215.0	208.2	442.9	201.3
OVERWEIGHT LAMBS	(OVER 52)			
Home Trade	190.0	183.3	398.4	181.1
Overall	190.0	183.3	398.4	181.1

Export quality lambs sold up to 261.5p per kilo and averaged 223.5p per kilo and home trade lambs sold up to 211.5p per kilo and averaged 207.6p per kilo.

	LAMBS UP TO 30KG	LAMBS 30.5-36KG	LAMBS 36.5-43KG	LAMBS 43.5-48KG	LAMBS 48.5 & OVER
	Av.	Av.	Av.	Av.	Av.
PREMIUM	-----	224.0p	225.1p	218.8p	-----
PRIME	205.0p	199.1p	205.6p	2208.3p	192.5p

CULL SHEEP - 480

Another strong entry of ewes met a very good trade. The ewe trade has definitely lifted over the past week and this certainly showed. Lean ewes still the best trade but fatter ewes have certainly improved.

Ewes topped at £113.00 & averaged £73.72
Rams topped at £110.00 and averaged £69.26

FORTHCOMING SALES

FRIDAY 28th JUNE	Second sale in the month of 347 Genuine Farmers Store Cattle & 431 Store Sheep together with Calves & Weanlings. Sale commences at 11.00am with the Store Sheep, 11.45am Claves & Weanlings, 12noon Store Cattle.
SATURDAY 29th JUNE	Sale of Plant and Machinery at the Beech, Little Hereford
MONDAY 1st JULY	Normal weekly market at Ludlow. Excellent contingent of buyers assured. Good entries needed in all sections. Sale commences at 9.30am with Finished Sheep, 11.00am Young Bulls, 12noon Clean Cattle, 2.00pm Barren Cows, 4.00pm onwards Killing Ewes. Annual Sale of 526 Acres of Standing Straw on farms in the Ludlow, Craven Arms and Leominster areas. Viz; 333 acres Winter Wheat, 120 acres Spring Barley, 37 acres Oil Seed Rape, 20 acres Triticale, 16 acres Winter Oats. Full catalogues available. Summary Sheet attached
MONDAY 8th JULY	Normal weekly market at Ludlow
FRIDAY 12th JULY	First Sale in the month of Store Cattle and Store Sheep, catalogue entries close Friday 5 th July

POULTRY, PLANT & MACHINERY SALE

At The Beech, Little Hereford, Ludlow, Shropshire, SY8 4BG

SATURDAY 29th JUNE

Poultry at 11.00am, Plant and Machinery at 11.30am

Poultry:

Large Selection of Chickens, Ducks and all type of Poultry followed by Poultry Houses, Feeders and Poultry Equipment

Plants:

Special entry of Flowering Trees, Shrubs and Roses, Dwarf and Ornamental Conifers, Fruit Trees, Bushes, Plants, Hedging and Screening Plants and Perennial Plants, Yew Trees, Laurels & Ecolphs (Approx. 500 lots).

Agricultural Machinery:

SIP 1650 twin drum Mower, PZ Haybob, PZ 300 Haybob, Ifor Williams Horse Box c/w new floor, Ifor Williams Livestock Trailer c/w Sheep Decks (good order), 14ft triple axle Hudson Livestock Trailer c/w Sheep Decks, 14ft twin axle Ifor Williams Livestock Trailer c/w Sheep Decks (wheels on side), Kawazaki Mule, Landrover 90 2.5TDi (R Reg, SORN), 2x Fraser Muck Spreaders, 2x 20ft Cattle Mangers, 5x Creep Feeders, 2x Cattle Ring Feeders, 5x Sheep Walk Through Feeders, Rectangular Sheep Bale Feeder, 10x Galvanised Trough on Stilts, Workshop Equipment and Tools, Sawn & Plained Timber, Hand Tools, Lawn Mowers, Strimmers, Hedge Cutters, Building Tools & Supplies inc. Roofing Sheets / Apexes.

Further entries invited

For more information please contact

Michael Thomas on 01584 872251 or 07890 898239

Or Gareth Wall on 01544 230316 or 07974 143336

Deliveries / Collections arranged with John Stinton: 07780 816007

COLLECTIVE SALE OF STANDING STRAW

At LUDLOW MARKET

MONDAY 1st JULY at 2.30pm

526 acres Winter Wheat, Spring Barley, Oil Seed Rape, Winter Oats, Triticale

From farms in the Ludlow, Craven Arms and Leominster areas

Details from Ludlow Market

Tel: 01584 872251 Ref: JU

STANDING STRAW SALES

TWYFORD FARM, PEMBRIDGE & LYNCH COURT, EARDISLAND

For JI Johnson

232 acres Ryegrass & Winter Wheat in 13 lots

FRIDAY 28th JUNE

Meet at Twyford Farm, Pembrige, HR6 9JY at 6.00pm

Each lot will be visited on the night

Kington Office: 01544 230316

LUNTLEY COURT, PEMBRIDGE, HR6 9EH

For DT & SM Owens

170 acres Winter Wheat & Winter Oil Seed Rape in approx. 10 lots

FRIDAY 28th JUNE

Meet at Luntley Court at 7.30pm

Each lot will be visited on the night

Kington Office: 01544 230316

UPPER BUCKTON, LEINTWARDINE

For Mr GH Lloyd

65 acres Winter Wheat & 86.5 acres Winter Barley

TUESDAY 2nd JULY

Meet at Upper Buckton at 6.00pm prompt

Craven Arms Office: 01588 672385

Part of WHITTON FARM, LEINTWARDINE

For David & Robert Williams

66 acres Winter Wheat

TUESDAY 2nd JULY

Meet adjacent to A4110 road by building after Upper Buckton at approx. 7.15pm.

Craven Arms Office: 01588 672385

STANDING STRAW SALES CONTINUED...
LADY ARBOUR, EARDISLEY, WINFORTON & LETTON

For EE & JA Rees & Son

211 acres Winter Wheat, Winter Barley & Winter Oats in 10 lots.

TUESDAY 2nd JULY

For sale on the farmyard at Lady Arbour, HR3 3NU at 6.00pm

Prior inspection necessary

Kington Office: 01544 230316

CROWE FARM, WILLERSLEY

For MJ Price & Son

13 acres Winter Oats in 1 lot

TUESDAY 2nd JULY

To be sold after Lady Arbour Straw Sale at Lady Arbour Farm, HR3 3NU at 6.00pm

Prior inspection necessary

Kington Office: 01544 230316

WOODSEAVES FARM, EARDISLEY, HR3 6LY

For P & MV Whittall

64.50 acres Winter Wheat & Winter Oats in 6 lots.

TUESDAY 2nd JULY

For sale on the farmyard at Woodseaves Farm at 7.00pm

Prior inspection necessary

Kington Office: 01544 230316

THE CASTLE, POPLARS & NASH'S OAK, LYONSHALL

For Messrs Burgoyne Farms

142 acres Winter Wheat & Oil Seed Rape in 11 lots

WEDNESDAY 3rd JULY

Meet at Castle Farm, HR3 6PS (on the road to Almeley) at 6.30pm

Each lot will be visited on the night.

Kington Office: 01544 230316

HILL HOUSE, CORFTON, CRAVEN ARMS

For Mr G Pugh

227 acres Winter Wheat & 25 acres Winter Oats

THURSDAY 4th JULY

Meet at Hill House at 6.00pm prompt

Craven Arms Office: 01588 672385

MEDLEY PARK FARM, CRAVEN ARMS

For Messrs DT Gittens

115.5 acres Winter Wheat

THURSDAY 4th JULY

Meet at Medley Park Farm after Hill House at approx. 7.30pm

Craven Arms Office: 01588 672385

HOWTON COURT, PONTRILAS, HEREFORD, HR2 0BG

For Messrs Whittall-Williams

180 acres Winter Wheat in 9 lots and 33.12 acres Winter Oil Seed Rape in 2 lots

MONDAY 8th JULY

Meet at Farmyard at 5.30pm

Each lot will be visited on the night

Kington Office: 01547 528621

Or Jenny Layton Mills: 07867 522859

MOOR FARM, STAPLETON, PRESTEIGNE, LD8 2LP

For Mr R Brandram Jones

257 acres Winter Wheat in 16 lots.

MONDAY 8th JULY

For sale on the farmyard at Moor Farm at 6.00pm

Prior inspection necessary.

Kington Office: 01544 230316

SALE OF STANDING STRAW

For Mr Mark Alderson

At LONG LANE, CRAVEN ARMS

23 acres of Oil Seed Rape in 2 lots

FOR SALE BY PRIVATE TREATY

Prior inspection can be made by prior telephone appointment
with Mr Mark Alderson on 01588 673302 or 07968 050234

Craven Arms Office: 01588 672385

TO LET BY TENDER

57.45 acres of Mowing Grass in 5 Lots

At THE MYNDE, BEDSTONE, BUCKNELL, SY7 OBD

Good access and fertilised.

TENDERS CLOSE: FRIDAY 28th JUNE at 12noon

Tel: 01547 528621 Ref. JMLM

GROWING WINTER BARLEY CROP

15.22 acres of Winter Barley

(Whole crop or combining)

At KIMBOLTON, LEOMINSTER, HEREFORDSHIRE

FOR SALE BY TENDER

TENDERS CLOSE: MONDAY 1st JULY at 5.00pm

Details Kington Office Tel: 01544 230316

Or Gareth Wall Tel: 07974 143336

IMPORTANT FARM DISPERSAL SALE

Of New Holland T6030 Plus Tractor, Class Dominator Combine,
JCB 526S Loadall, Ford Ranger Pick Up, Kia Ceed Car, Modern
Arable & Grassland Machinery, Trailers, Sheep & Cattle Equipment
together with Small Tools and Generals Sundries,

50 Conventional Bales of Hay and 12 acres of Mowing Grass

At NORTH FARM, EATON MASCOTT, SHREWSBURY, SY5 6HF

On SATURDAY 6th JULY at 11.00am

Further entries invited

Details Kington Office Tel: 01544 230316

Or Gareth Wall on 07974 143336

For any further information upon any of the above please telephone:

LUDLOW MARKET LIVESTOCK TEAM

MICHAEL THOMAS

01584 872251 WORK, 01568 750402 HOME or 07890 898239 MOBILE

STORE SHEEP AND CALVES AND WEANLINGS ENQUIRIES

GARETH WALL

07974 143336 MOBILE

Please make use of our free on farm Field Officer Service.

CONTACT

LOUI JONES on 07828 921864 or 01568 611174

Or GEOFF PRICE on 07816 818177

All other enquiries:

JOHN UFFOLD (Consultant)

01584 872251 WORK OR 01584 841258 HOME

McCARTNEYS
- ALL THE HELP YOU NEED!



McCartyneys
Rural

LUDLOW MARKET

COLLECTIVE SALE OF STANDING STRAW

Approx.
332.84 ACRES of WINTER WHEAT
120 ACRES of SPRING BARLEY
37 ACRES of OIL SEED RAPE
16 ACRES of WINTER OATS
And 20 ACRES of TRITICALE

Situated in
LUDLOW, CRAVEN ARMS,
LEINTWARDINE AND LEOMINSTER

FOR SALE BY AUCTION
ON MONDAY 1st JULY 2019
In the Calf Ring at 2.30pm

Full catalogues available
from the Market Office
Tel: 01584 872251

Auctioneers
McCartyneys LLP, Ludlow Livestock Market,
The Ox Pasture, Overton Road, Ludlow, SY8 4AA
Tel: 01584 872251 Ref: JU

Earl of Plymouth Estates, Bromfield

105 acres Winter Wheat in 6 Lots

Situated at Langley Farm (Between Culmington & Ludlow Racecourse

61 acres Winter Wheat in 1 Lot

Situated at Pools Farm, High Walton

45 acres Winter Wheat in 1 Lot

Situated at End of Leintwardine Straight, on right down track

120 acres Spring Barley in 2 Lots

Situated at Whitbach Farm - both sides of the road to the village hall

B Alderson & Son, Upper Walton Farm

16 acres Oats in 1 Lot

Situated at Upper Walton Farm

SP & JM Whiteman, Lower Pedwardine

39.98 acres Fiskin Winter Wheat in 3 Lots

Situated at The Glebe, Caynham

50 acres Fiskin Winter Wheat in 3 Lots

Situated at Wootton, Whitton, Ludlow

MC Thomas. The Liners, Orleton

20 acres Triticale in 1 Lot

Situated at The Liners, Orleton

- approx. 1 mile from Portway turn, Orleton - Gate opposite Wood Farm

Treasure (Stockton Bury) Ltd, Stockton Bury, Kimbolton, Leominster

31.86 acres Costello Wheat in 1 Lot

Situated at Stockton Bury, Kimbolton

T Parry, Burnt Mill, Hopton Wafre

13 acres Oil Seed Rape in 1 Lot

Situated at Burnt Mill, Hopton Wafer

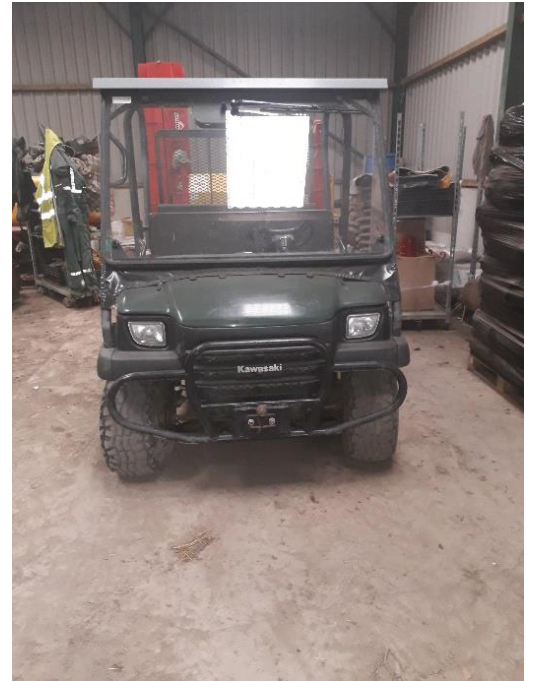
24 acres Oil Seed Rape in 1 Lot

Situated at Hamnish, Leominster

POULTRY, PLANT & MACHINERY SALE

**At The Beech, Little Hereford,
Ludlow, Shropshire, SY8 4BG**

This SATURDAY 29th JUNE



Poultry at 11.00am,
Plant and Machinery at 11.30am

Poultry:

Large Selection of Chickens, Ducks and all type of Poultry followed by Poultry Houses, Feeders and Poultry Equipment

Plants:

Special entry of Flowering Trees, Shrubs and Roses, Dwarf and Ornamental Conifers, Fruit Trees, Bushes, Plants, Hedging and Screening Plants and Perennial Plants, Yew Trees, Laurels & Ecolphs (Approx. 500 lots).

Agricultural Machinery:

SIP 1650 twin drum Mower, PZ Haybob, PZ 300 Haybob, Ifor Williams Horse Box c/w new floor, Ifor Williams Livestock Trailer c/w Sheep Decks (good order), 14ft triple axle Hudson Livestock Trailer c/w Sheep Decks, 14ft twin axle Ifor Williams Livestock Trailer c/w Sheep Decks (wheels on side), Kawazaki Mule, Landrover 90 2.5TDi (R Reg, SORN), 2x Fraser Muck Spreaders, 2x 20ft Cattle Mangers, 5x Creep Feeders, 2x Cattle Ring Feeders, 5x Sheep Walk Through Feeders, Rectangular Sheep Bale Feeder, 10x Galvanised Trough on Stilts, Workshop Equipment and Tools, Sawn & Plained Timber, Hand Tools, Lawn Mowers, Strimmers, Hedge Cutters, Building Tools & Supplies inc. Roofing Sheets / Apexes.

Further entries invited

For more information please contact
Michael Thomas
on 01584 872251 or 07890 898239
Or
Gareth Wall
on 01544 230316 or 07974 143336

Deliveries / Collections arranged with
John Stinton: 07780 816007